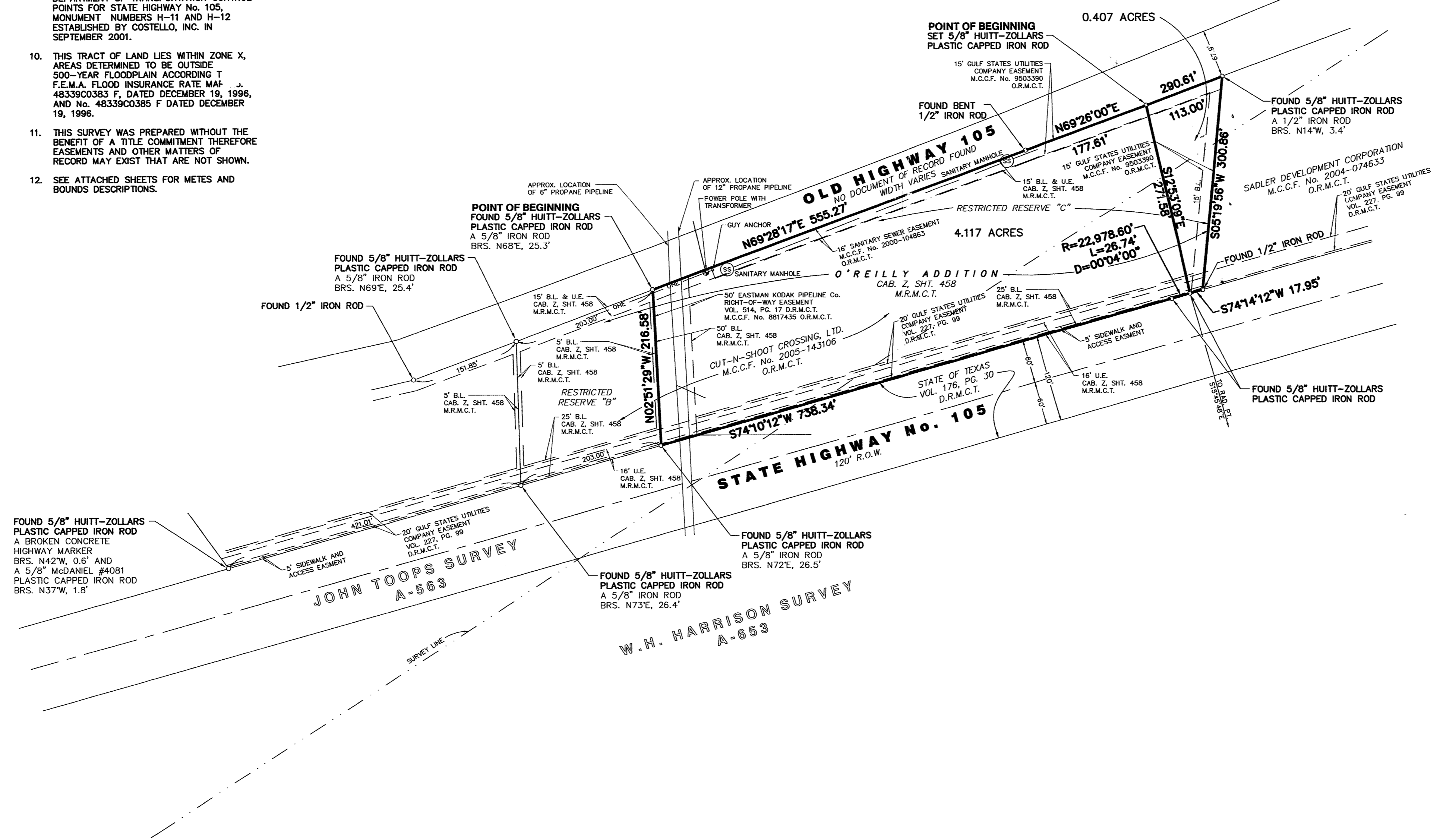
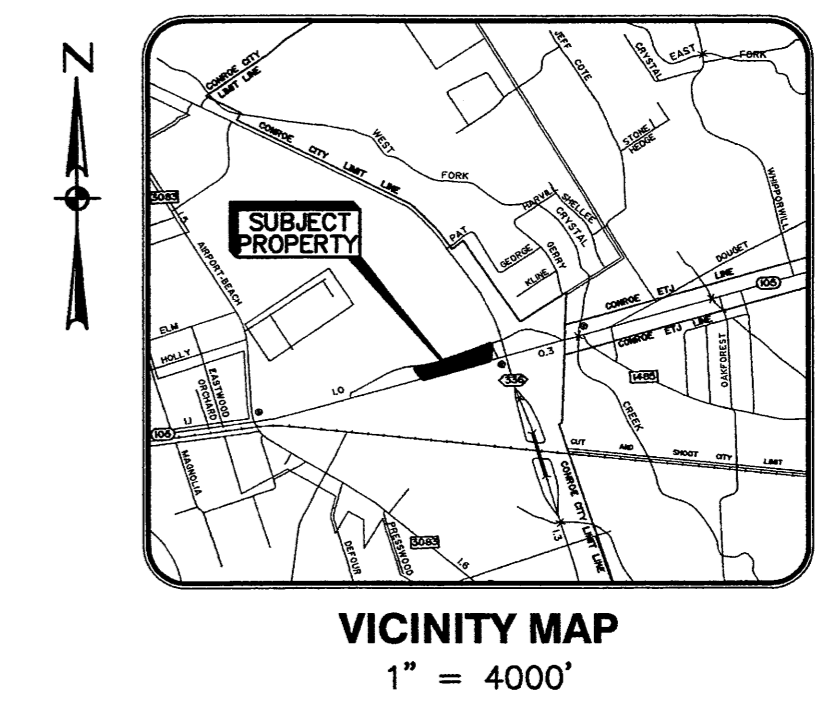
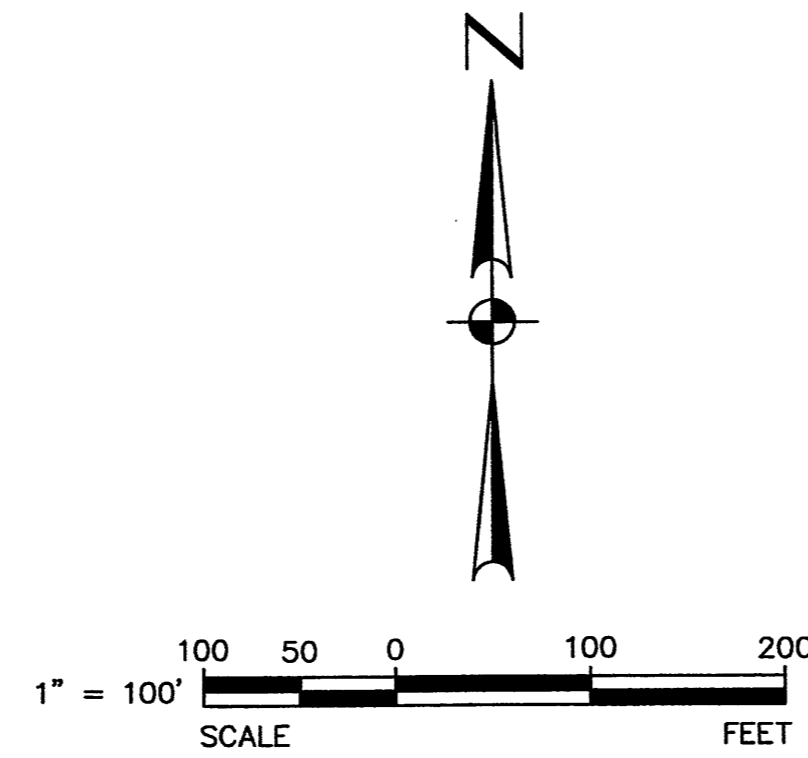


- NOTES**
1. B.L. INDICATES BUILDING SETBACK LIM
 2. U.E. INDICATES UTILITY EASEMENT
 3. M.C.C.F. No. INDICATES MONTGOMERY COUNTY CLERK'S FILE NUMBER
 4. O.R.M.C.T. INDICATES OFFICIAL RECORDS MONTGOMERY COUNTY, TEXAS
 5. D.R.M.C.T. INDICATES DEED RECORDS MONTGOMERY COUNTY, TEXAS
 6. M.R.M.C.T. INDICATES MAP RECORDS MONTGOMERY COUNTY, TEXAS
 7. CAB. INDICATES CABINET
 8. SHT. INDICATES SHEET
 9. BEARINGS ARE BASED ON THE TEXAS STATE PLANE COORDINATE SYSTEM, CENTRAL ZONE NORTH AMERICAN DATUM OF 1983 (NAD 83, 1993 ADJUSTMENT) ACCORDING TO TEXAS DEPARTMENT OF TRANSPORTATION CONTROL POINTS FOR STATE HIGHWAY No. 105, MONUMENT NUMBERS H-11 AND H-12 ESTABLISHED BY COSTELLO, INC. IN SEPTEMBER 2001.
 10. THIS TRACT OF LAND LIES WITHIN ZONE X, AREAS DETERMINED TO BE OUTSIDE 500-YEAR FLOODPLAIN ACCORDING TO F.E.M.A. FLOOD INSURANCE RATE MAP 48339C0383 F, DATED DECEMBER 19, 1996, AND No. 48339C0385 F DATED DECEMBER 19, 1996.
 11. THIS SURVEY WAS PREPARED WITHOUT THE BENEFIT OF A TITLE COMMITMENT THEREFORE EASEMENTS AND OTHER MATTERS OF RECORD MAY EXIST THAT ARE NOT SHOWN.
 12. SEE ATTACHED SHEETS FOR METES AND BOUNDS DESCRIPTIONS.



SURVEYOR'S CERTIFICATION

SURVEYED ON THE GROUND IN MAY AND OCTOBER 2006, AND TO THE BEST OF MY KNOWLEDGE, INFORMATION AND BELIEF THIS SURVEY SUBSTANTIALLY COMPLIES TO THE CURRENT MINIMUM DETAILED REQUIREMENTS OF A TEXAS SOCIETY OF PROFESSIONAL SURVEYORS CATEGORY 1A CONDITION II STANDARD LAND TITLE SURVEY.

NOVEMBER 1, 2006

BY: HUITT-ZOLLARS, INC.

STEVEN WILLIAMS, R.P.L.S.
TEXAS REGISTRATION No. 4819

NO.	REVISION	DATE

HUITT-ZOLLARS

HUITT-ZOLLARS, INC.
1500 SOUTH DARTY, ASPFORD, SUITE 200
HOUSTON, TEXAS 77077
(281) 496-0066

CENTURY 21, FIRST WOODLANDS REALTY

28811 145 NORTH
SHENANDOAH, TX 77381
281-298-8389

TRACTS OF LAND IN RESTRICTED RESERVE "C", O'REILLY ADDITION, A SUBDIVISION IN THE CITY OF CONROE, MONTGOMERY COUNTY, TEXAS

DATE: 11-01-2006
DRAWN BY: RHC
CHECKED BY: SEW
PROJ. NO. 02-1069-01